

**Tillbridge Solar Project
EN010142**

**Volume 6
Environmental Statement**

**Figure 18-5: Transport Cumulative Traffic Routes
Document Reference: EN010142/APP/6.3**

**Regulation 5(2)(a)
Infrastructure Planning (Applications: Prescribed Forms and
Procedure) Regulations 2009**

**December 2024
Revision Number: 01**

tillbridgesolar.com

Revision: 01 Drawn: LL Checked: CW Approved: AT Date: 2024-12-09
Filename: I:\na.aecomnet.com\is\EMEA\London-UK\ON06Legacy\UK\ON06PPFP\SW001\1\VDPELibrary\GIS_DATA\Projects\Greta III\Layout\Tillbridge Solar ES_Figure18-5_TransportAndAccess.mxd

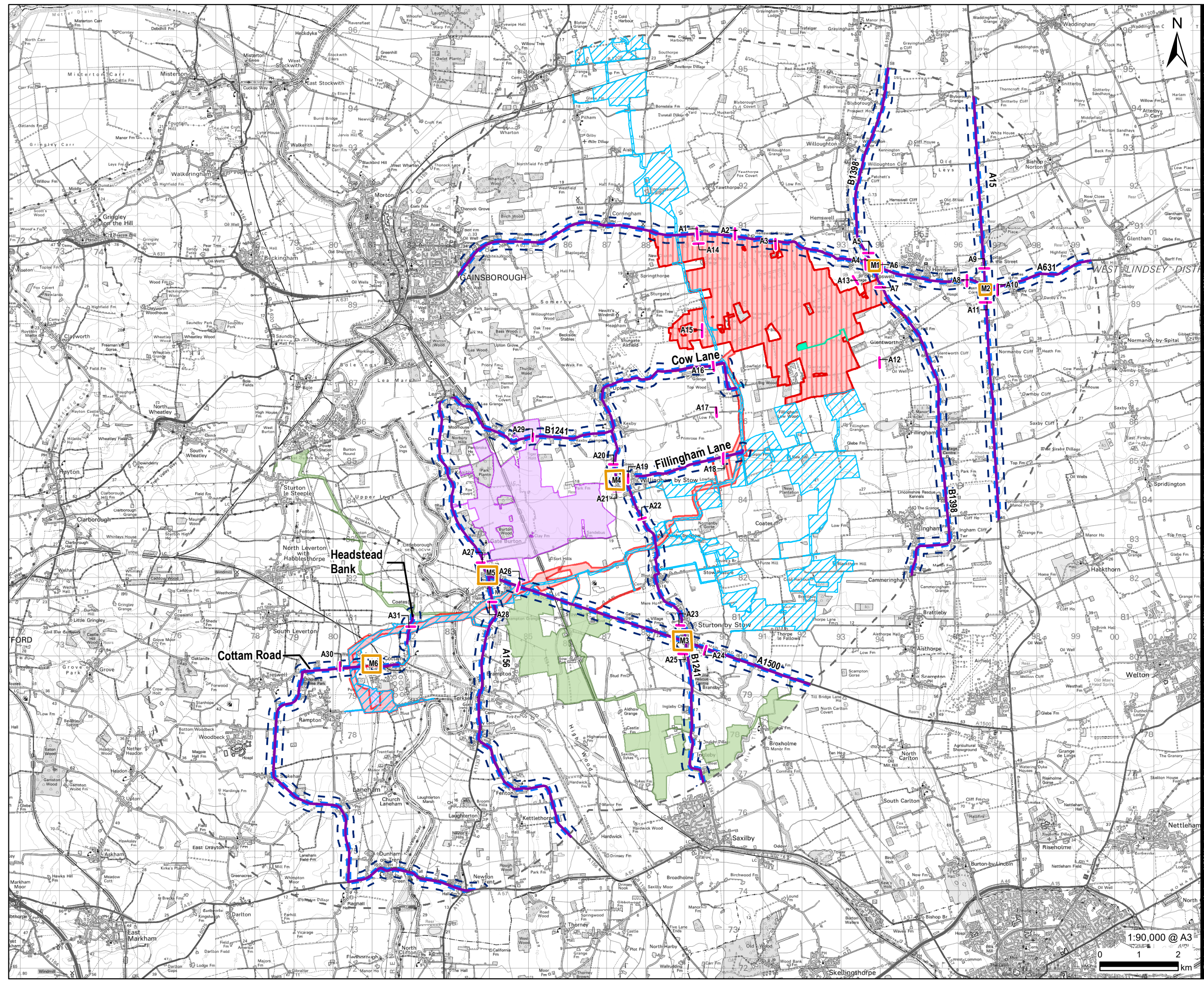


PROJECT
Tillbridge Solar

CLIENT
Tillbridge Solar Ltd

CONSULTANT
Aldgate Tower
2, Leman Street
London, E1 8FA
United Kingdom
T +44-0207-645-2000

- LEGEND
- Order limits
 - Principal Site Boundary
 - Manual Classified Count
 - Automatic Traffic Count
 - Cumulative Traffic Route
 - 50m Traffic Noise Assessment Study Area
 - 200m Traffic Air Quality Assessment Study Area
 - 5km Traffic Study Area
 - Cottam Solar Project Boundary
 - Gate Burton Energy Park
 - Glentworth Oil
 - West Burton Solar Project



NOTES
© Crown Copyright 2024. All rights reserved.
Ordnance Survey Licence AC0000808122.

Notes:
The traffic surveys were carried out between
Monday 11th to Tuesday 19th July 2022

ISSUE PURPOSE
DCO Submission
PROJECT NUMBER
60677969

FIGURE TITLE
Transport Cumulative Traffic Routes

FIGURE NUMBER
Figure 18-5